



Avondale Playground Design Committee Meeting



Avondale School District- Playground Committee Meeting



Goals

- Improve Overall Health
- Enhance Learning Potential

Elements of Play

- Swing
- Spin
- Rock
- Climb
- Balance



Avondale School District- Playground Committee Meeting

The Project

- New Playground Equipment
- Expand the play area to accommodate the new playground equipment
- Replace existing playground equipment that is failing
- Replace existing engineered wood fiber play surface



Safety and Inclusive

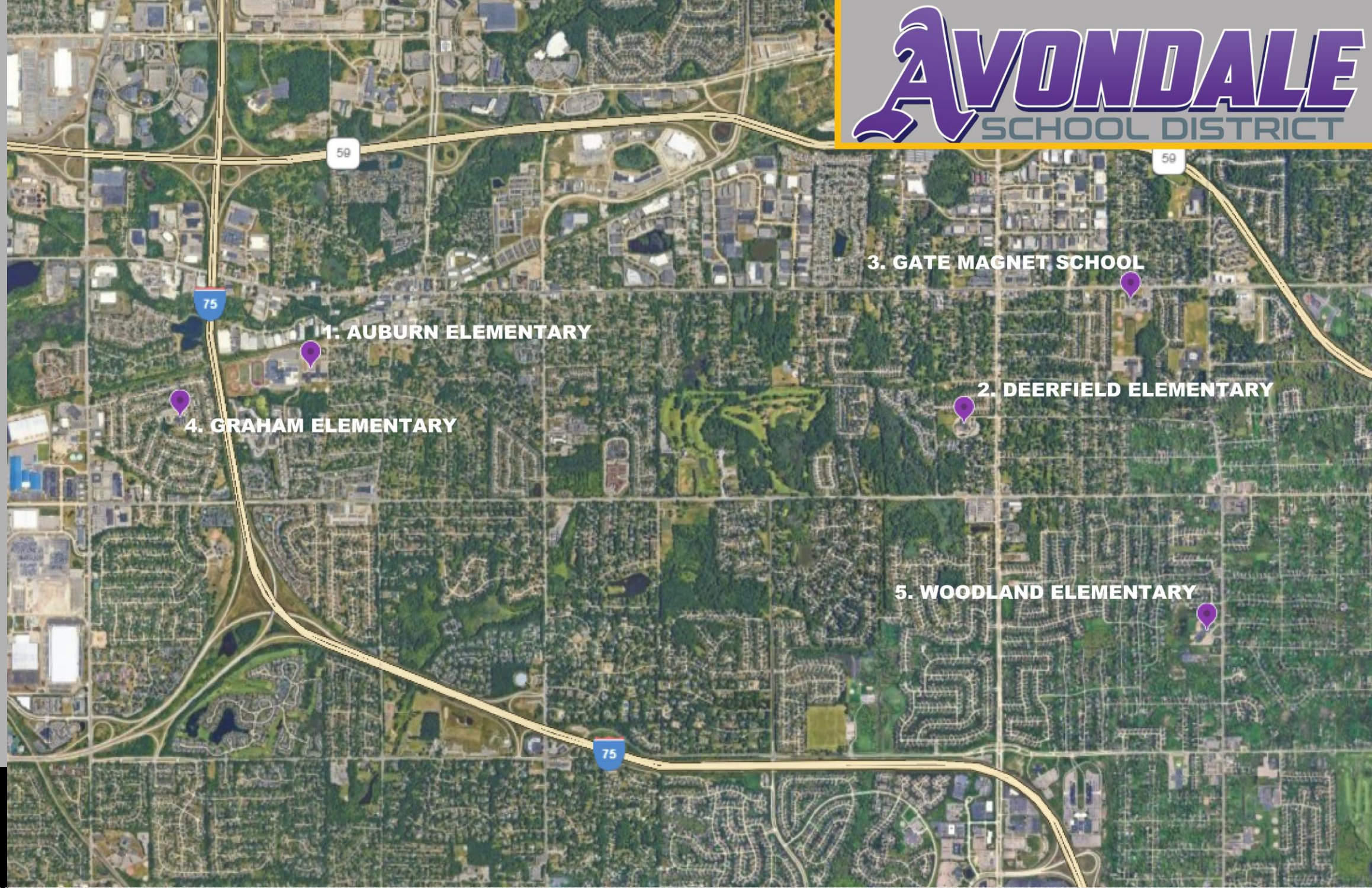
- All new and existing equipment meets to national standards for safety and accessibility
- Different types of play based on the users and developmental ability
- Inclusive





The Schools

1. Auburn Elementary
2. Deerfield Elementary
3. GATE
4. Graham Elementary
5. Woodland Elementary



Avondale School District- Playground Committee Meeting



Input Needed

Where should we
add additional play
area?



Avondale School District- Playground Committee Meeting



Auburn Elementary

80' x 50' Play Area
Proposed South of
Existing Playground



Avondale School District- Playground Committee Meeting



Deerfield Elementary

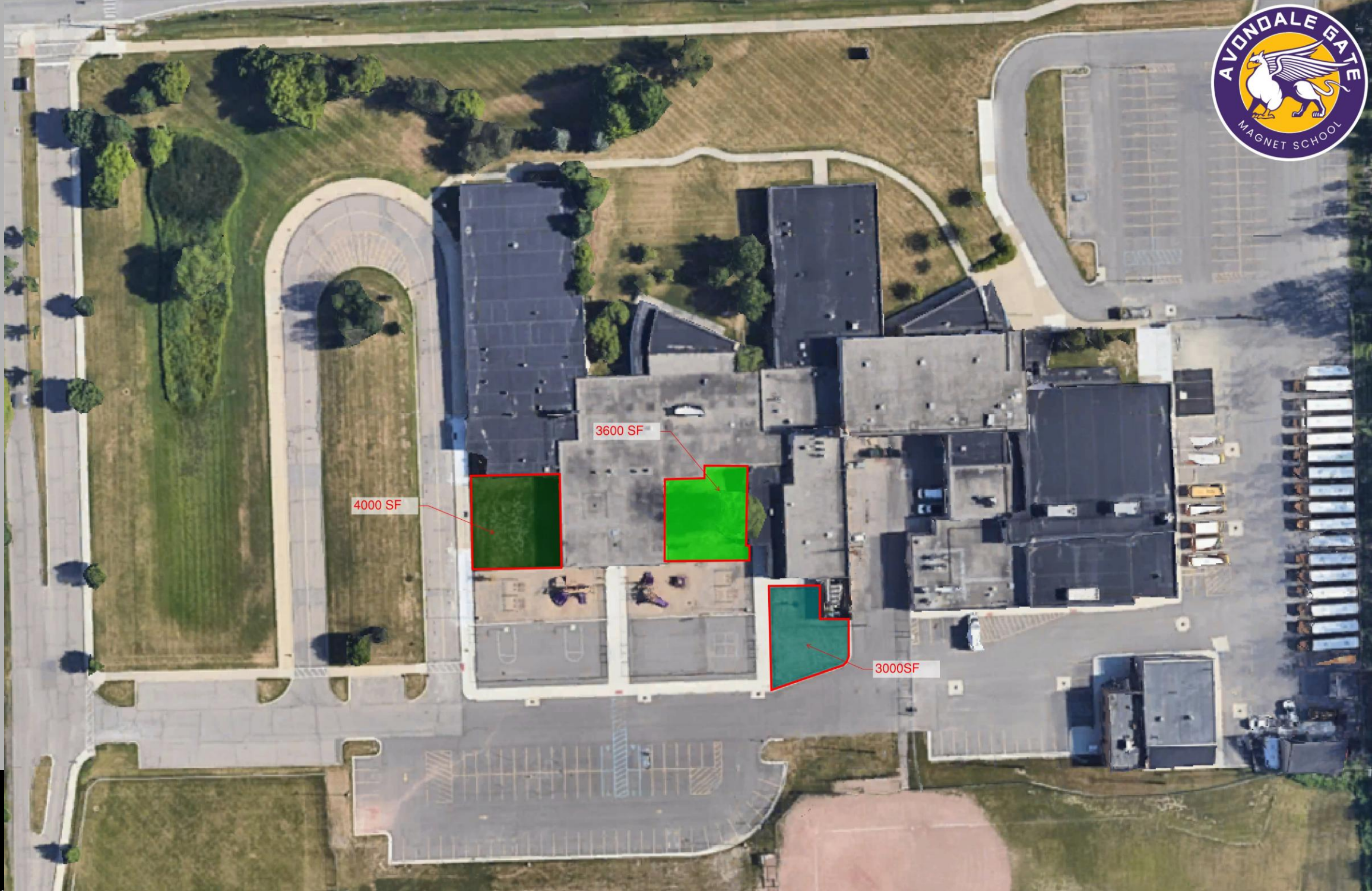
80' x 50' Play Area
Proposed North West of
Existing Upper El.
Playground



Avondale School District- Playground Committee Meeting



**GATE Magnet
School**
3 Options for new
Playground Location

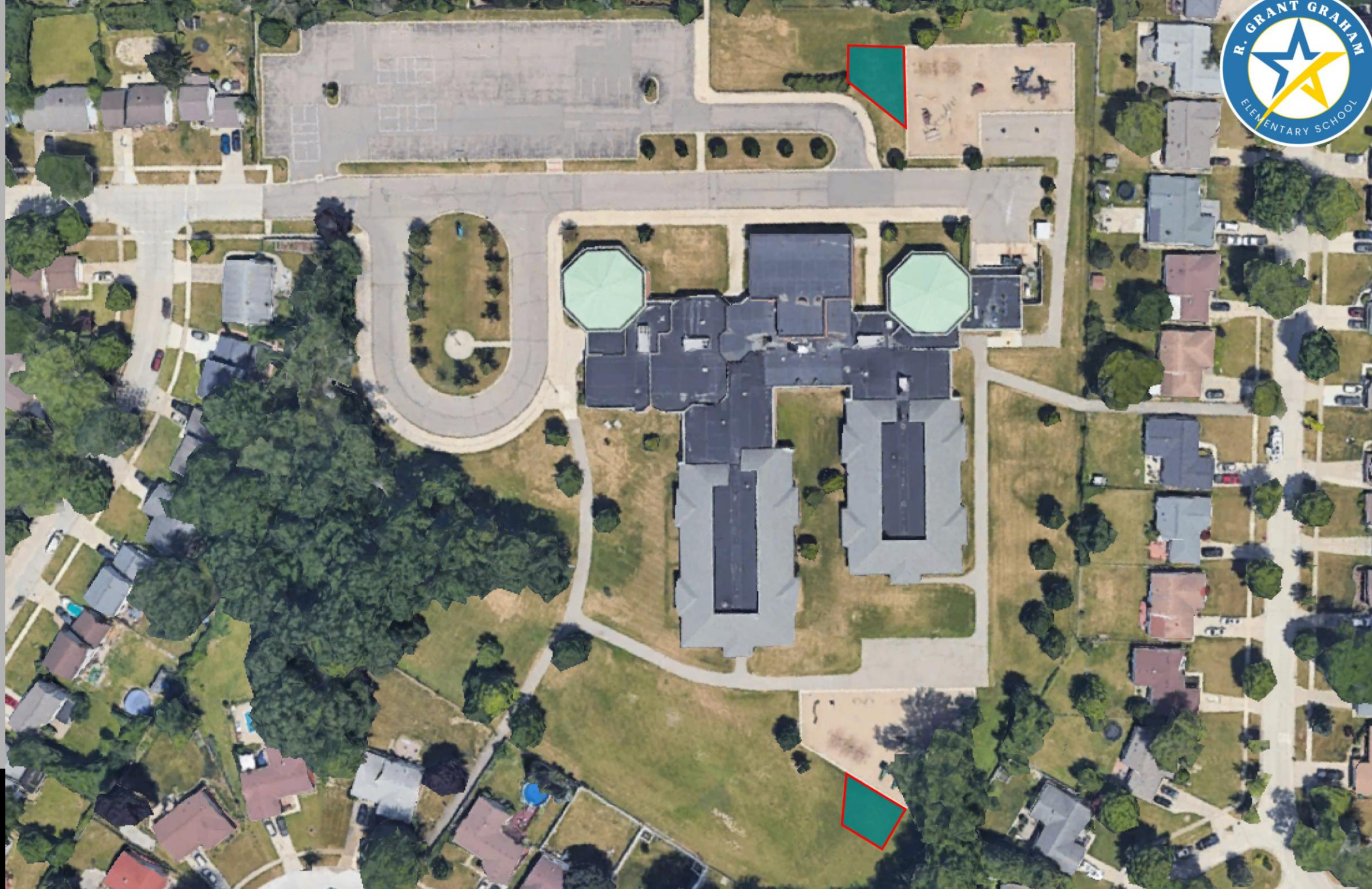




Graham Elementary

40' x 50' Play Area
Proposed South of
Existing South.
Playground

40' x 50' Play Area West
of North Playground



Avondale School District- Playground Committee Meeting



Woodland Elementary

Main Goal is to fix
Drainage to Promote
use of existing Wood
Fiber Play area as
separate project

Install New Equipment
to better utilize the
existing space



Avondale School District- Playground Committee Meeting



Existing Equipment To Repair/ Replace

- We worked with the Districts Playground Consultant to Identify Current Equipment Condition
- Selecting Pieces of Equipment to be replaced based on Wear & Use
- Some repairs required of Existing Equipment to Remain



Avondale School District- Playground Committee Meeting



Auburn Elementary

Recommendations

- Replace Track Ride
- Replace Play Structure
- Repair Shad Canopy
- Repair Stepper



B PLAYGROUND EQUIPMENT
A1.01A SCALE: NO SCALE



A **PLAYGROUND EQUIPMENT**
A1.01A SCALE: NO SCALE



PROJECT
Avondale School District
Auburn Elementary
Playground Equipment
Replacement
Auburn Hills,
Michigan

SHEET

Playground Equipment Proposed Replacement

PROJECT NUMBER
2025-056

SHEET NUMBER
A1.01



Avondale School District- Playground Committee Meeting



Recommendations

- Replace Climber in Lower El. Not Age appropriate
- Replace Play Structure Lower El.
- Replace Play Structure Upper El.



C PLAYGROUND EQUIPMENT
A1.01A SCALE: NO SCALE



B PLAYGROUND EQUIPMENT
A1.01A SCALE: NO SCALE



A PLAYGROUND EQUIPMENT
A1.01A SCALE: NO SCALE

[illegible]

PROJECT
Avondale School District
Deerfield Elementary
Playground Equipment
Replacement
Auburn Hills,
Michigan

SHEET
**Playground Equipment
 Proposed Replacement**

PROJECT NUMBER
2025-056

SHEET NUMBER
A1.01



Avondale School District- Playground Committee Meeting



GATE

Recommendations

- Nothing to Replace or Repair



Avondale School District- Playground Committee Meeting



Graham Elementary

Recommendations

- Replace Track Ride
- Replace Play Structure
- Replace Log Roller
- Replace Slide
- Repair Toss Up



D **PLAYGROUND EQUIPMENT**
A1.01A SCALE: NO SCALE



C **PLAYGROUND EQUIPMENT**
A1.01A SCALE: NO SCALE
(2) TRACK RIDERS BEYOND



B **PLAYGROUND EQUIPMENT**
A1.01A SCALE: NO SCALE



E **PLAYGROUND EQUIPMENT**
A1.01A SCALE: NO SCALE



A **PLAYGROUND EQUIPMENT**
A1.01A SCALE: NO SCALE



ISSUE DATE	ISSUED FOR
12/09/2025	COMMITTEE REVIEW
DRAWN	NSQ
CHECKED	DWJ
APPROVED	DWJ



PROJECT
Avondale School District
Graham Elementary
Playground Equipment
Replacement

Auburn Hills,
Michigan

SHEET
Playground Equipment
Proposed Replacement

PROJECT NUMBER
2025-056

SHEET NUMBER

A1.01



Avondale School District- Playground Committee Meeting



Recommendations

- Replace Play Structure Upper El.
- Replace Play Structure Lower El.
- Replace Tire Swing
- Replace Spring Riders in Lower El.



	ISSUE DATE	ISSUED FOR
	12/09/2020	COMMITTEE REVIEW
	DRAWN	N50
	CHECKED	DWJ
	APPROVED	DWJ



PROJECT
Avondale School District
Woodland Elementary
Playground Equipment
Replacement
Auburn Hills,
Michigan

SHEET
**Playground Equipment
 Proposed Replacement**

PROJECT NUMBER
2025-056

SHEET NUMBER
A1.01



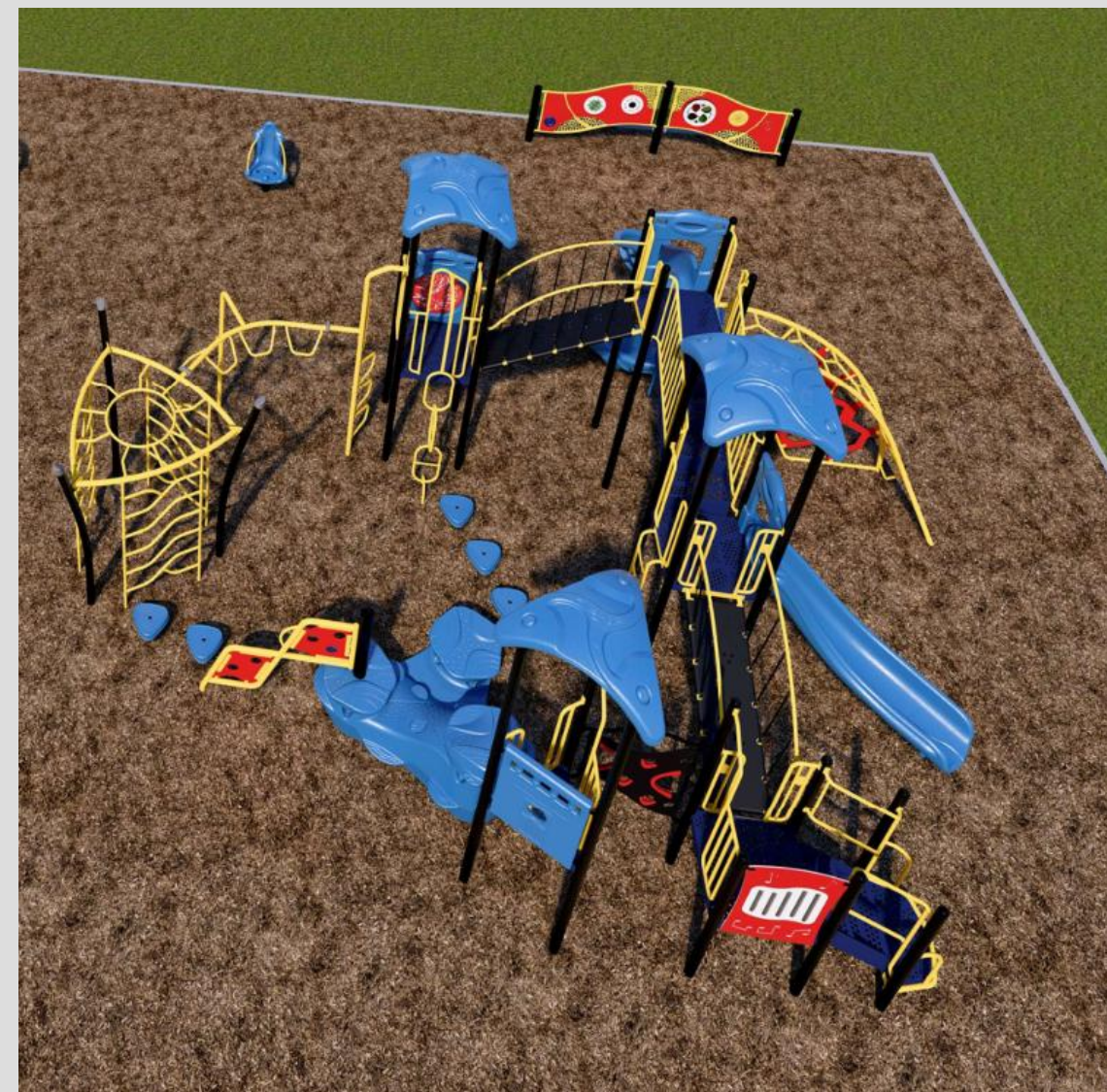
Avondale School District- Playground Committee Meeting



Input Needed

What type of new playground equipment should be added?

- Swing
- Spin
- Rock
- Climb
- Balance



Avondale School District- Playground Committee Meeting



Option 1 – Big Structure

Addition of a Single Large Play structure in the new Play Area

Entire budget for Equipment is used on this single Large Structure



Rendered in Bluebell Palette



A PLAYCORE Company

www.gametime.com

Avondale Public Schools
Playground - Option One



SINCLAIR
RECREATION

www.sinclair-rec.com



Avondale School District- Playground Committee Meeting



Option 1 – Big Structure



Avondale Public Schools
Playground - Option One



Avondale Public Schools
Playground - Option One



Avondale School District- Playground Committee Meeting



Option 2 – Medium Structure & Individual

Single Medium Size Play Structure

Multiple Individual Pieces of Play Equipment

Can be split among play areas



Rendered in Deep Space Palette



A PLAYCORE Company

www.gametime.com

Avondale Public Schools
Playground - Option Two



www.sinclair-rec.com

Avondale School District- Playground Committee Meeting



Option 2 – Medium Structure & Individual Pieces



Avondale Public Schools
Playground - Option Two



Avondale Public Schools
Playground - Option Two



Avondale School District- Playground Committee Meeting



Option 3 – Individual Pieces

All Individual Pieces of
Equipment

Flexibility

Multiple locations



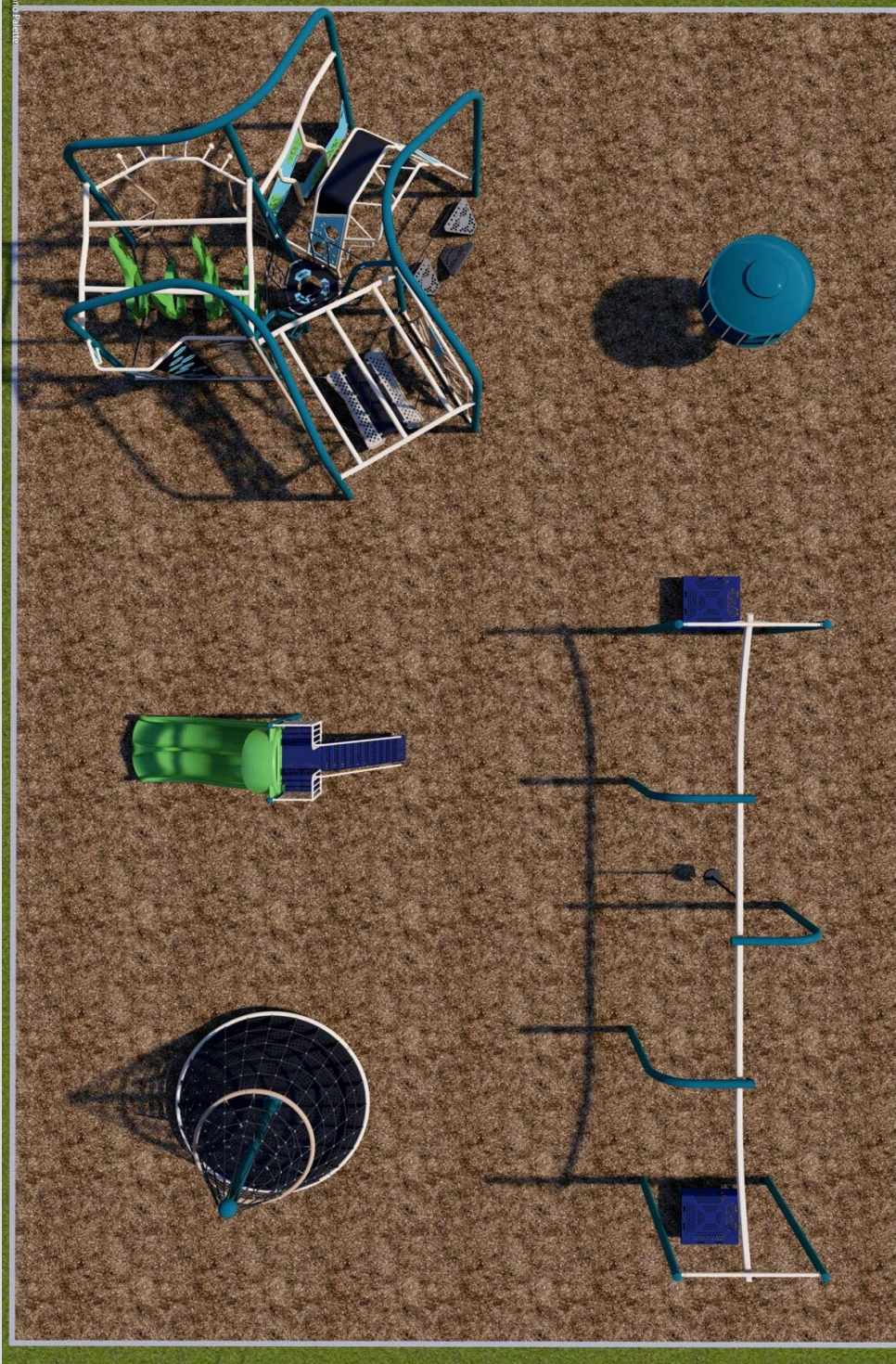
Avondale Public Schools
Playground - Option Three



Avondale School District- Playground Committee Meeting



Option 3 – Individual Pieces



Avondale Public Schools
Playground - Option Three



Avondale Public Schools
Playground - Option Three



Avondale School District- Playground Committee Meeting



**Different solutions
for each location.**

- **Types of equipment**
- **Where to expand**

Next Steps

- **Schedule Individual Meetings with Each Schools Playground Committee after winter break**



Avondale School District- Playground Committee Meeting



Questions?



Avondale School District- Playground Committee Meeting